

3 Initial setup

1. Into the service mode

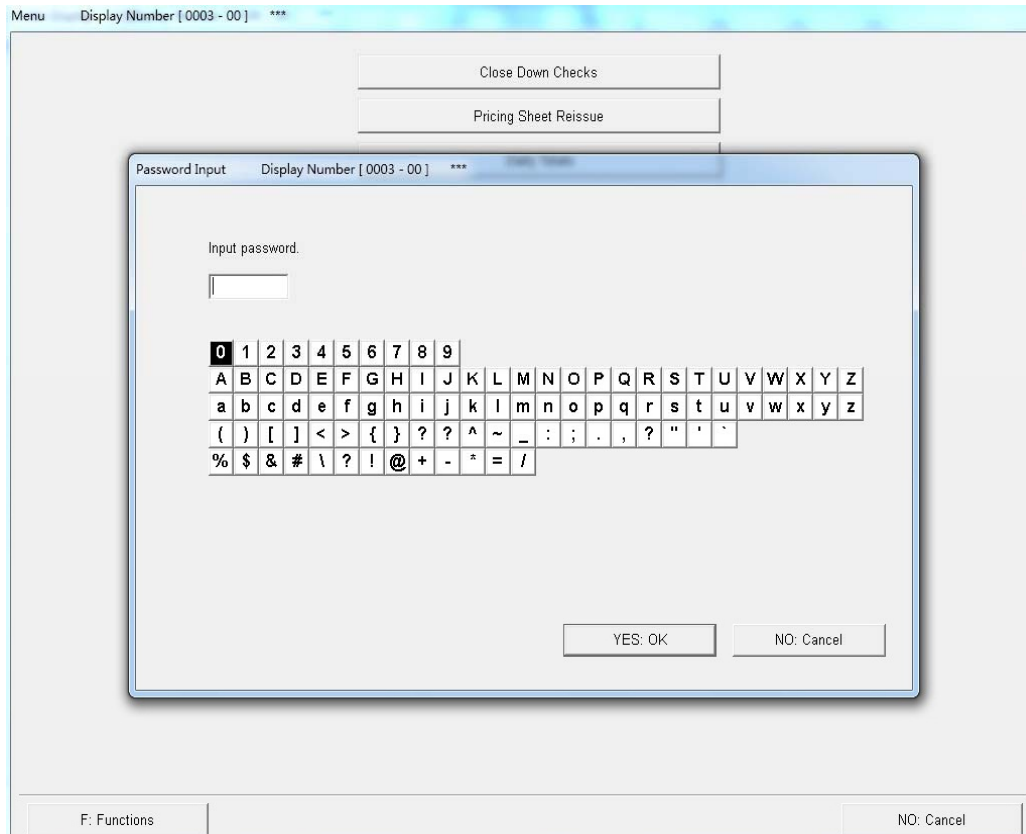
Service personnel passwor

1. Press the **YES** key to select **Menu**.



2. Press the **F** key, and then press the **-1** key.

3. Enter the current password (4 Numbers). and press **YES** Key.



If you don't know how to calculate the service password, please contact our engineers.
When it is in service mode, **Service Mode** is displayed on each display.

3 Initial setup

2. Paper Specification Registration/Setup

Menu → Extension → Setup → Laser Setup → Paper Specification Registration/Setup

1. Select the paper type to be used for the setup
 2. Select the paper Magazine to be used for the setup
- Click YES button to registration

The screenshot shows a dialog box titled "Paper Specification Registration/Setup" with a status bar indicating "Display Number [1028 - 00]" and "Service Mode ***". The main area is titled "Paper Specification Registration/Setup" and contains the sub-heading "Paper Type Selection/Paper Magazine Selection".

Under "Select the paper type to be used for the setup.", there are three dropdown menus:

- 1: 85: MV3
- 2: 77: EDGE9
- 3: 84: Ever Beauty for Laser

Under "Select the Paper Magazine to be used for the setup.", there are three dropdown menus, each with an "OK" or "-" button:

- 1: 127 (1) OK
- 2: 89 (2) OK
- 3: 254 (1) -

At the bottom, there is a button labeled "Paper Specification Registration/Setup" and a footer with "F: Functions", "YES: Enter", and "NO: Cancel". The taskbar at the bottom shows the time as 07:58.

3. Carry out Initial setup

Menu → Extension → Setup → Initial setup

The screenshot shows a dialog box titled "Initial Setup" with a status bar indicating "Display Number [1028 - 01]" and "Service Mode ***". The main area is titled "Initial Setup" and contains the text "Initial Setup has been completed."

Below this text is a text box containing "Paper Type: 1 MV3 127(1)".

Further down, there are two lines of text:

- If you execute Initial Setup again, all setup data will be initialized.
- When you want to set up other paper type, execute Paper Specification Registration Setup.

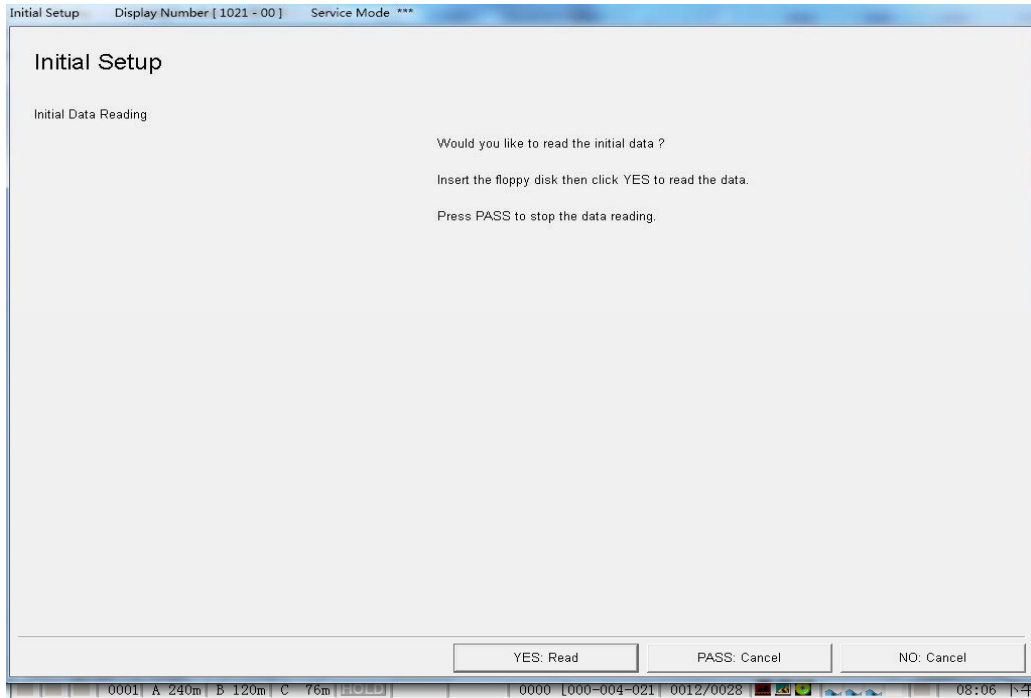
At the bottom, there are two buttons: "YES: Execute" and "NO: Cancel". The taskbar at the bottom shows the time as 08:01.

Click **YES** button. Start initial setup

3 Initial setup

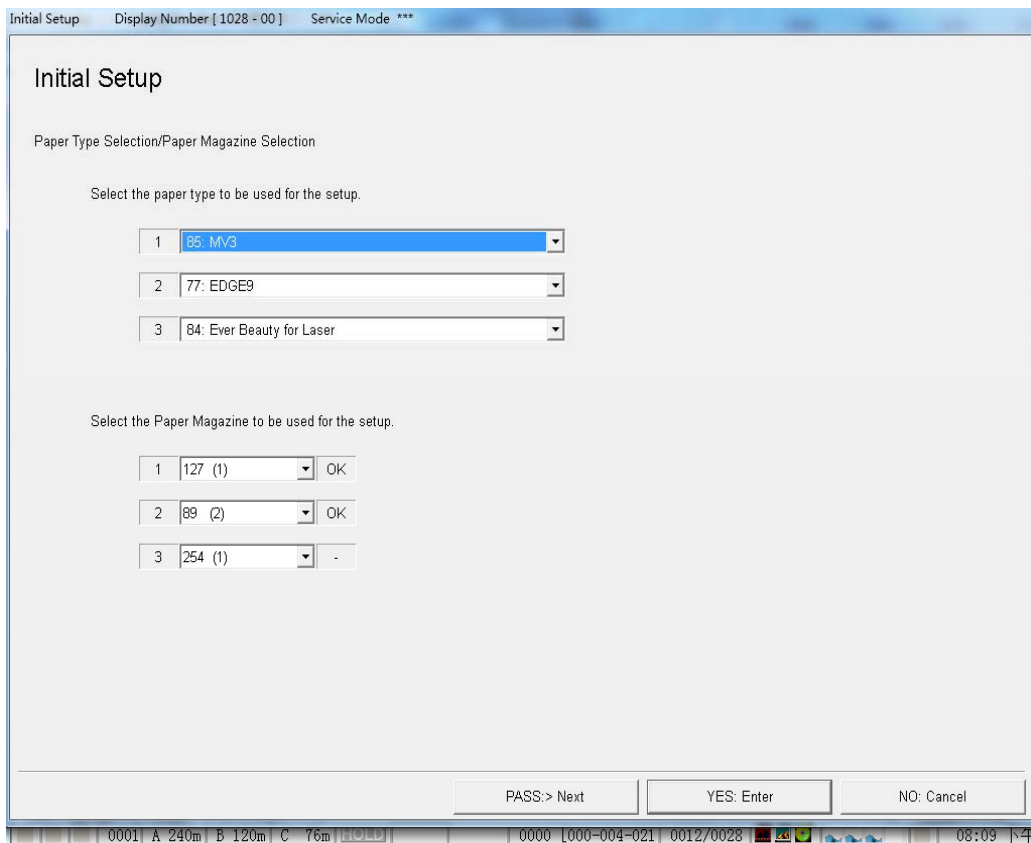
2. Initial setup

Usually, The suggestion choice pass don't read the backup data.



3. Continue to carry out Initial setup

Click Next button



According to the prompt on screen carry out all Initial Setup.

Next step